

**New
Travel
Etiquette
for
Visitors**

General Version

**Thank you for your cooperation with Japan's
infectious disease control measures.**



**Choose shops or
accommodation that have
implemented health and
hygiene measures.**



**Practice good health and
hygiene measures such as
wearing a mask and
washing/sanitizing your
hands, even if you are
vaccinated.**



**Monitor your physical health
daily.**



Maintain physical distancing.



Japan Tourism Agency
Ministry of Land, Infrastructure, Transport and Tourism

**New
Travel
Etiquette
for
Visitors**



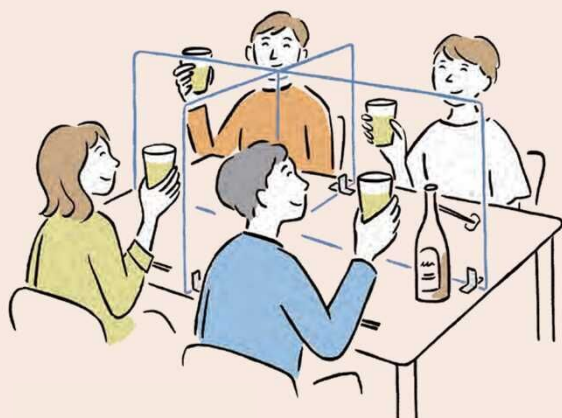
**Accommodation,
Drinking/Dining Version**



Check your body temperature and sanitize your hands upon check-in at your accommodation.



Refrain from talking when using public baths.



Follow infection prevention measures, even when drinking.



Minimize your time spent in shared dining areas.



Japan Tourism Agency
Ministry of Land, Infrastructure, Transport and Tourism

**New
Travel
Etiquette
for
Visitors**



Transportation Version



**Wear masks when
using public
transport.**



**Improve ventilation as
much as possible.**



**Try to travel outside of
peak travel times.**



**Try to refrain from
talking when using
public transport.**



Japan Tourism Agency
Ministry of Land, Infrastructure, Transport and Tourism

**New
Travel
Etiquette
for
Visitors**



Sightseeing/ Shopping Version



**Try to travel outside
of peak times and
visit places that are
not crowded.**



**Keep your voice down
in public spaces.**



**Maintain physical
distancing, even
when outside.**



**Sanitize your hands
prior to and after
touching products
such as souvenirs in
shops.**



Japan Tourism Agency
Ministry of Land, Infrastructure, Transport and Tourism