

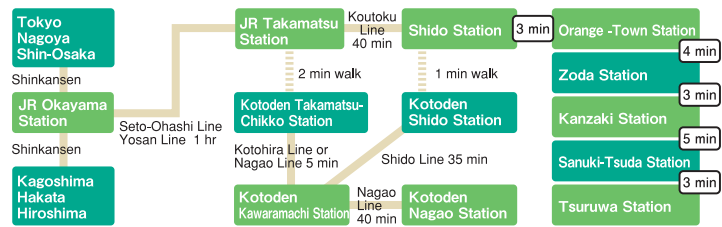
## Access to Sanuki City



# 香川県 さぬき市 どりっぷ

KAGAWA SANUKI CITY TRIP

### Access to Sanuki City by Train



### Access Information

**Sanuki City Community Bus**  
TEL.087-894-1113

**JR Takamatsu Station Railway Information Center**  
TEL.087-825-1701

**Kotoden Takamatsu-Chikiko Station**  
TEL.087-851-9950

### Sanuki City Taxi Information

**Iroha Tax**  
1053-2 Nagaonishi, Sanuki City  
TEL.0120-16-8339

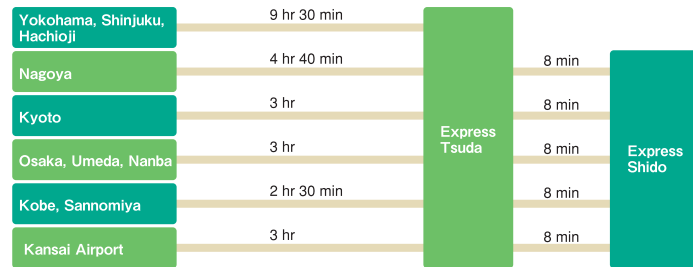
**Ookawa Kotsu**  
919-2 Tsuda, Tsuda-machi, Sanuki City  
TEL.0120-42-1516

**Okawa Taxi**  
385-13 Ishida higashi ko, Sangawa-machi, Sanuki City  
TEL.0120-43-8455

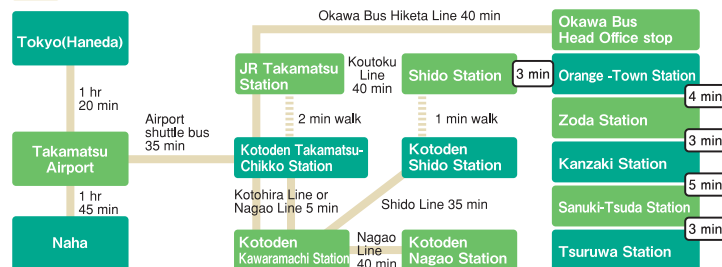
**Sankyo Taxi**  
872 Nagaohigashi, Sanuki City  
TEL.0120-81-8099

**Marusen Taxi**  
495-5 Shido, Sanuki City  
TEL.0120-08-8856

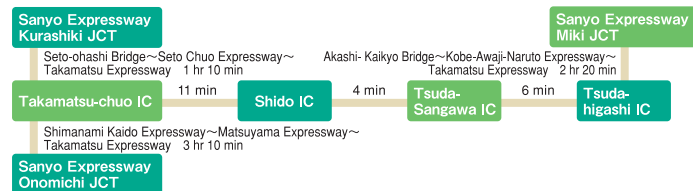
### Access to Sanuki City by Express Bus



### Access to Sanuki City by Air



### Access to Sanuki City by Car



## Sanuki City Tourist Guidebook



Sea, mountains, sunshine and smiles  
**Welcome to Sanuki City**



Inquiries about sightseeing, accommodations and meals  
**Sanuki City Tourism Association**  
5385-8 Shido, Sanuki City, Kagawa prefecture 769-2195 Sanuki City Commerce and Tourism Division  
**TEL.087-894-1114**  
Sanuki City Tourism Association Website <http://sanuki-kanko.jp/>





# さぬき市どりっぷ

Sea, mountains, sunshine and smiles  
Welcome to **Sanuki City**

## Profile of Sanuki City

Area ● 158.63 square kilometers  
(as of October 1, 2015)  
Population ● 50,105  
households ● 20,863 (as of February 28, 2017)  
City Tree ● Pine  
City Flower ● Cosmos  
City Color ● Green



Sanuki is full of places where you can enjoy the richness of nature, beautiful scenery and relaxation. Visit "Tsuda no Matsubara", which is famous for the picturesque scenery of its white sand and green pine trees, the Ohkushi peninsula, where you can enjoy the view of the Seto Inland Sea, or take your family to enjoy the outdoors to the full in the Seaside Corridor.

Also, inside the city, there is Shidoji Temple which is the 86th stop on The 88 Temple Pilgrimage in Shikoku, Nagaoji Temple which is the 87th stop, and Ookuboji Temple of the Kechiganji Temple, which is the 88th and final stop. All of these temples have facilities for pilgrims where you can enjoy traditional culture, relaxation and friendly service.



### Topics

#### Sanuki City's Mascot character Sakki

This mascot character was created on April 1, 2012 to commemorate the 10th anniversary of the city merger. She is dressed like the pilgrims who come to follow The 88 Temple Pilgrimage in Shikoku. She was designed to represent many local symbols of Sanuki City. Her stick is a Japanese yam that is a local product of Sanuki City, her scarf is Sanuki udon noodles, her sedge hat with the city symbol, her hair is the green color of the natural wilderness of the mountains and her clothes are the blue color of the Seto Inland Sea and the Cosmos flower, which is the City Flower.







## Abare Mikoshi (portable shrine)

In the Tsukahara district of Nagao-nishi in Sanuki City, there is an unusual festival that has been held since the Edo era. Young people wearing farm clothes, their faces heavily painted with face-paint and ink, carry a rough portable shrine made from local materials including bamboo, vegetables and even flowers. The carriers run in all directions, as they carry the portable shrine around the grounds of the shrine and the Sando, the approach to the shrine, while loudly chanting "Mottainai (what a waste!)".

As the portable shrines make their way along the Sando, the approach to the shrine, the watching viewers scream with delight as the carriers slam their bodies into the main portable shrine in the lead of the procession, dive repeatedly into the nearby pond, throw even sightseers into the pond, and generally go crazy. Abare Mikoshi (portable shrine) is an autumn festival of Tsukahara Inari Shrine held to pray for a good harvest and freedom from sickness.

It is said that the unique custom started a long time ago when the local young people were not allowed to carry the decorated portable shrine (the main portable shrine).

It is also said that in the years when the Abare Mikoshi portable shrine did not make its usual rounds, disease and disasters occurred as a result. The locals believe that "If the Abare does not come out, then the village will have a rough time" and so they have continued to hold this unique event for over 100 years.



A great man born in Sanuki City

## Hiraga Gennai

Scholar of herbalism, Dutch scholar, inventor, artist... Hiraga Gennai was a genius who applied his prodigious talent in many and varied fields. In the Shido area you can visit only the Hiraga Gennai Memorial Museum but also Hiraga Gennai's former residence and herb garden, and even see his paintings and the Erekiteru (a hand-operated electric generator) he invented.

### The many talents of Gennai

#### Scholar of herbalism

He collected ingredients of medicines and held the first pharmaceutical exhibition in Japan. He published a work explaining the properties and effects of his exhibition's products called "Butsuruihinshitsu".

#### Playwright

Under the pen-name Fukuchi Kigai, he wrote numerous Ningyo Joruri Japanese puppet theater works, and one of his works, the famous work of Edo Japanese puppet theater "Shinreiyaguchi no watashi" is still performed today.

#### Inventor

One of Gennai's most well known inventions is the Erekiteru (a hand-operated electric generator). It was the first device in Japan to generate static electricity using friction.



#### Potter

He developed "Gennai Yaki" a genre of ceramics designed for artistic appreciation. He was the first artist in Japan to use the world map as a design element in pottery.



#### Copy writer

He was the creator numerous advertising catch phrases and product names such as "Doyo No Ushi No Hi" (the Midsummer Day of the Ox) and "Sosekiko" toothpaste.



Portrait of Hiraga Gennai

### Hiraga Gennai Memorial Museum



Address: 587-1 Shido, Sanuki City  
Tel: 087-894-1684  
Opening Hours: 9:00 - 17:00  
Closed: Monday.  
End of Year/New Year period  
Parking: 13 car parking spaces

### Former Residence of Hiraga Gennai



Address: 46-1 Shido, Sanuki City  
Tel: 087-894-5513  
Opening Hours: 9:00 - 17:00  
Closed: Monday.  
End of Year/New Year period  
Parking: 13 car parking spaces

The largest production center in Japan

## Paulownia wood clogs, Geta



The Shido district is a center for the production of paulownia wood clogs called Geta which boasts the largest volume of production in Japan. The Geta, which are created by artisans, are strong, light and have excellent water absorbency and heat insulation properties. If you make a reservation in advance you can even experience attaching a thong to the Geta yourself.

Make your own  
original Geta



### Yamanishi Shouten

Address: 5382-33 Shido, Sanuki City  
Tel: 087-894-0306  
Opening Hours: 8:00 - 17:00  
Closed: Saturday / Sunday / Holidays

Taikodai (floats with drums)

give stirring performances as they parade through the streets

## Shido district Tawa Shrine Autumn Festival



The road from the shrine to the Otobisho (resting place for gods) is long and the portable shrine and 8 districts' Taikodai (floats with drums) called "Chosa" ritual parade takes about 5 hours to complete while the notes of the Ise Song ring out powerfully into the night. After they arrive at the Otobisho the carriers offer the Chosa to the gods, turning them on their side to display the designs on the inside of the awnings. Then, eight of the carriers put on an impressive and powerful display of strength as they spin the Chosa around by themselves. After they reach Otobisho, they attach a roof decorated with lanterns, then return to the shrine together with the portable shrines.



# The Shikoku Pilgrimage is **Japan's heritage**

## Finishing the last three temples

In recent years the number of young people and foreigners attempting the Shikoku pilgrimage has increased. The Shikoku Pilgrimage was first carried out by Kobo Daishi, who was born in Sanuki and went on a pilgrimage around all 88 spots of the pilgrimage. The total distance is 1,400 kilometers and it is said to have been created when he did it in 815 A.D. when he was 42 years old, so for more than 1200 years pilgrims have been following the route. The pilgrims' sedge hat is recorded as having belonged to his "two companions" who supported and protected Kobo Daishi during his travels, going along with him on what was quite a dangerous journey, so the hat symbolizes prayers, growth, training and healing, which are the aspirations of those who take part in the pilgrimage. Sanuki City is home to the 86th stage, Shidoji Temple, the 87th stage Nagaoji Temple and the 88th Stage Ookuboji Temple, which bring the journey to a close.

### Topics

**In April 2015, the Shikoku Pilgrimage was recognized as "Japan's Heritage".**

Japan's Heritage is a system of the ministry of culture that recognizes regional culture and intangible cultural assets with certification as a package, and provides support for tourism promotion and regional revitalization efforts.

## The 86th Stage **Shidoji Temple**

The feudal lord of Takamatsu Matsudaira Yorishige built the main Hall (Nationally Designated Importance Cultural Property) and there are also many other things to see, including the Five Story Tower, the Kongorikishi statue that is said to have been created by Unkei. There is also the Ama no haka, female diver's grave, which has been passed on as the legend of the female diver's bead search, and a garden created by the Japanese garden architect Shigemori Mirei.



Address: 1102 Shido, Sanuki City  
Tel: 087-894-0086  
Access: 10 minutes walk from JR Shido Station stop of the Sanuki Community bus line, 5 minutes walk from the entrance to the national highway.  
Parking: Yes

Muzentei garden is an dry garden style that represents the legend of the female diver's bead search.



As you finish the last three temples on the pilgrimage route, you can enjoy traditional Japanese culture and the beauty of the four seasons. Make a pilgrimage in your own style.

## The 87th Stage **Nagaoji Temple**



The "Kyodo" in front of the gates is a Nationally Designated Important Cultural Property. It is the symbol of this famous temple that has flourished since the Kamakura era. Also Lady Shizuka, who is said to have been the lover of Minamoto no Yoshitsune, entered the Buddhist nunhood and the hair she cut off is said to be buried in the tonsured mound.

Enjoy a leisurely lunch while looking out over the garden  
**Lunch at "Honbo-zensho"**

※Reservations required



You can look out at the changing seasonal appearance of the garden while enjoying your lunch at Honbo-zensho.  
Open: 5 days/week (For details see: <http://nagaoji.com/>)  
Cost of Meal: 3,500 yen  
Address: 653 Nagaonishi, Sanuki City Tel: 0879-52-2041  
Honbo-zensho (Restaurant) Tel: 0879-52-5251  
Access: 5 minutes walk from the Okawa Bus Head Office stop of the Sanuki Community Bus Line.  
Parking: Yes



## The 88th Stage **Ookuboji Temple**

The final stop on the Shikoku Pilgrimage is Kechiganji Temple. Located at the foot of 744m high Mt. Nyotai, the Main hall and its connected structure Posterior hall Tahoto are surrounded by a peaceful atmosphere. In autumn the 700 year old ginkgo tree puts forth bright colored leaves and the temple is crowded with many worshippers.

Address: 96 Tawakanewari, Sanuki City  
Tel: 0879-56-2278  
Access: 1 minute walk from Ookuboji Temple stop of Sanuki Community Bus Line  
Parking: Yes



### Volunteer Guides

## Ohenro Tsukasa no Kai

An organization dedicated to spreading knowledge about the Shikoku Pilgrimage in Sanuki City.  
Available areas: Shidoji, Nagaoji, Ookuboji temples and the pilgrimage route between them  
Applications: Telephone inquiries required in advance  
Guide fees: negotiable  
Inquiries: 087-894-1114 (City Chamber of Commerce Tourism Section)

### Ohenro Experience

## Shido Machibura Tankentai

An easy way to experience the feeling of walking the pilgrimage route. Change into the white pilgrimage wear and sedge hat of a pilgrim and enjoy the experience of walking the pilgrimage route in the temple town of Shido.  
Number of Participants: 1-15 (reservation 2 days in advance required)  
Location: Hiraga Gennai Memorial Museum  
Fees: Adults 2,500 yen, High School/ University Students 2,300 yen, Elementary / Junior High School Students 2,000 yen, Infants 1,700 yen (Includes entrance fee to Hiraga Gennai Memorial Museum)  
※ 1,000 yen refund on return of the costume  
Applications: 090-8970-9352 (Office / Oka)



# The best gourmet spots of Sanuki City

## More than just Sanuki udon

Shido bay is one of the foremost centers of oyster production in Kagawa Prefecture. The oysters here are highly regarded for their uniform high quality and good taste. "Kakiyaki", oysters grilled in the shell on a hotplate is a seasonal delight in winter.

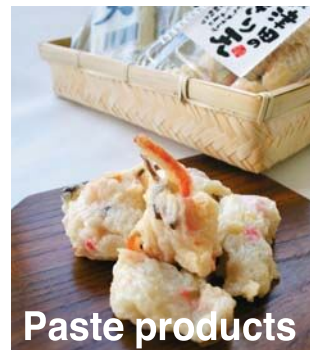
### Oysters

A store that supplies genuine high quality oysters personally selected by its fisherman owner.

### Seafood Grilled Oysters Kakurega



Address: 5382-49 Shido, Sanuki City  
Tel: 087-894-3836 (Reservations required)  
Opening Hours: 11:30 – 14:00 (Lunch is available on weekdays only)  
17:00 – 22:00 (last order 21:30)  
Closed: Monday (Also closed December 31, January 1)  
Parking: Yes



**Jakoten** (fried paste fish meat) is a local specialty of Tsuda. Every bite tastes more delicious than the last. Jakoten is also a rich source of calcium.

### Paste products

### Asamitakeo Shoten

Address: 1667-2, Tsuda, Tsuda-machi, Sanuki City  
Tel: 0879-42-3630  
Opening Hours: 08:00 – 17:00  
Closed: Wednesday, Sunday  
Also for sale at the Tsuda no Matsubara Service Area on the Takamatsu Expressway.

### Minamigawa Japanese Yam Study Group

Address: 1309 Minamigawa, Okawa-machi, Sanuki City  
Tel: 0879-43-3064  
Sale place: Minamigawa-Shizen-no-le  
Sale period: Late November – Mid December  
※Delivery orders can be made by telephone



### Japanese yam

Enjoy Japanese yams bursting with delicious flavor

### Oysters

All you can eat oysters freshly caught in Shido bay!  
In summer you can also enjoy Kaisendon (a bowl of rice topped with fresh seafood) and other seafood dishes.

### Grilled Oysters Watanabe

Address: 5382-47 Shido, Sanuki City  
Tel: 087-894-8676 (Reservations required)  
Please see website for opening hours and holidays (<http://kakiyakiwatanabe.com/>)  
Parking: Yes



### Sanuki Winery

Kagawa prefecture grapes are distinguished by their strong taste and rich aroma. Those grapes were used to make this original wine.

### Sanuki Winery

Address: 2671-13 Oda, Sanuki City  
Tel: 087-895-1133  
Opening Hours: 09:00 – 17:00  
Closed: Tuesday (Open on Public Holidays)



A healthy lunch spot where you can enjoy a lunch made with lots of locally grown vegetables.

### Aotenjyou café

Address: 3061 Tomidanishi, Okawa-machi, Sanuki City  
Tel: 0879-43-2010  
Closed: No regular closing day  
Opening Hours: 11:30 – 18:00  
Parking: Yes

The ryokan building has been reformed to create a nostalgic relaxing structure with a feeling of wide open space.



### Agemochi (Winter Only)

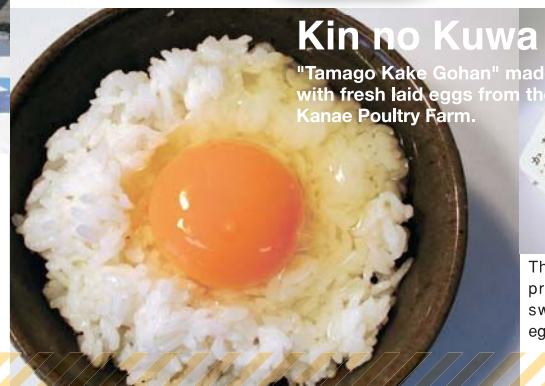
A nostalgic and absolutely delicious traditional snack from a Japanese sweet store with a 100 year history.

### Japanese Confectionery Miyoshi Shogetsudo

Address: 1157-3 Tsuda, Tsuda-machi, Sanuki City  
Tel: 0879-42-2231  
Opening Hours: 07:00 – 18:00  
※Cakes are sold from 10:00  
Closed: Sunday  
Parking: Yes



You can enjoy both Japanese and Western sweets here.



### Kin no Kuwa Tamago

"Tamago Kake Gohan" made with fresh laid eggs from the Kanae Poultry Farm.



### Sanuki Choux

A hit product that was created at the same time as Sanuki City!



### Aina Florian

Address: 1895-1 Shido, Sanuki City  
Tel: 087-894-3625  
Closed: Tuesday  
Opening Hours: 10:00 – 19:30  
Parking: Yes

### Strawberry Daifuku



The tastes of freshly picked strawberries and home made white bean paste and daifuku mochi blend perfectly together in this juicy melt-in-the-mouth treat.

### Japanese Confectionery Tsuruya

Address: 3340-4 Showa, Sanuki City Tel: 0879-52-2272  
Opening Hours: 08:00 – 19:00  
Closed: Wednesday

Make sure you try the delicious and highly nutritious Kin no Kuwa Tamago.



### KANATAMA KITCHEN

Address: 2594-1 Tomidanishi, Okawa-machi, Sanuki City  
Tel: 0879-49-1422  
Opening Hours: 10:00 – 18:00  
Closed: Thursday

There are also many other products to try including sweets made from fresh eggs.



# Sanuki City's Local Udon

Sanuki City has long been famous for the quality and taste of its udon noodles. Today, the name "Sanuki Udon" is famous all over Japan. The best tasting "Sanuki Udon" is waiting for you in Sanuki City. Make sure to try it.



**Haryu** Address: 2161-2 Tsuda, Tsuda-machi, Sanuki City Tel: 0879-42-2766  
Opening Hours: 10:00 – 14:00 Closed: Friday Parking: Yes

## Compare the tastes of Dojo Udon! Dojorinpic in Sanuki

Annual event held every year in November. The best dojo udon from inside and outside Sanuki City is brought together in one place to find out which dishes have the best taste, appearance and combination of toppings. Visitors to the event can compare the different flavors and enjoy the different tastes of udon dishes from different areas. It is a lively festival with lots of people attending every year.



Location: Public Space in front of JR Zoda Station  
Inquiries: Dojorinpic in Sanuki Organizing Committee TEL: 090-8698-7590

## Uchikomi Udon



There are restaurants and gift shops in front of the gates of Ookuboji Temple serving local cuisine that refreshes the traveler.

The most popular dish "Uchikomi Udon" is a local udon dish made from ingredients including Japanese taro, daikon radish, carrot, burdon and fried tofu combined with udon and boiled in miso. It is a well-loved dish that is good for warming the body in winter and replenishing lost stamina in summer.

## Yasobaan

The udon served at Yasobaan is made from "Sanuki Dream" wheat grown in Kagawa Prefecture and kneaded together with water from a spring in the mountains behind Ookuboji Temple that is said to have been given miraculous healing powers by Kobo-Daishi.

Address: 93-1 Tawakanewari, Sanuki City  
Tel: 0879-56-2160  
Opening Hours: 08:00 – 17:00  
Closed: No closing days  
Parking: 80 car spaces

## Nodaya

Address: 87-5 Tawakanewari, Sanuki City  
Tel: 0879-56-2028  
Opening Hours: 07:00 – 17:00  
Closed: No regular closing day  
Parking: 10 car spaces

## Specially chewiness and taste Dojo Udon



A local style of udon eaten since old times in the Sanuki City Zota Area. It is made by adding loaches, udon and vegetables to a large pot and cooking them together with miso. In historical times these noodles were eaten together by villages after the end of the rice planting season to build community ties. Like eel, loaches are also said to replenish strength and provide a good source of nutrition.

## Sagano

Address: 914-15 Nagaohigashi, Sanuki City  
Tel: 0879-52-4715  
Opening Hours: 11:30 – 13:30  
※By reservation only in the evenings  
Closed: Public holidays  
Parking: 20 car spaces

## Seaside Corridor Caravan Park

A campground with sweeping views of the Seto Inland Sea. You can enjoy barbecues and cycling surrounded by a refreshing sea breeze. Sanuki Winery is nearby, where you can go for a tasting or to try their special Sanuki Wine Flavored Soft Ice-cream.

Address: 2671-88 Oda, Sanuki City  
Tel: 087-895-1150  
Opening Hours: 08:30 – 17:30  
Closed: Tuesday, January – February, End of Year / New Year Period



Surrounded by the sea, sky and mountains

## Spend time in the great outdoors

Sanuki City has cottages and campgrounds surrounded by the sea, sky and mountains. Why not spend some time enjoying a different world from your everyday life.



## Cottage Sakura no Sato

Enjoy barbecues on the terrace deck. Also nearby you can enjoy cherry blossoms and irises at the famous Kikaku Park and enjoy a relaxing time at the Twin Pal Nagao hot spring facility.

Address: 2450 Nagaohigashi, Sanuki City  
Tel: 0879-52-4166  
Open all year round  
Parking: Yes

There is a hot spring nearby too



## Miroku Natural Park Campground

With cottages and bungalows, and other facilities inside the park, you can enjoy athletics and Yutopia Miroku Onsen as well as a local historical and cultural museum, National designated important cultural property "Former Eri Family House" and Sanuki City other historical facilities.

Address: 3286 Tomidanaka, Okawa-cho, Sanuki City  
Tel: 0879-43-5200  
Closed: Wednesday, End of Year / New Year Period  
Parking: Yes



① Enjoying a barbecue surrounded by nature ② The view from Ohkushi Natural Park Square ③ The Prefectural Kikaku Park is a famous cherry blossom viewing spot in eastern Sanuki.





# Take a Drive by the Sea

Enjoy a relaxing drive while looking out across the gentle waters of the Seto Inland Sea



## Tsuda-no-Matsubara

This beautiful scenic area has been selected as one of Japan's 100 most scenic landscapes of white sand and pine trees as well as one of Japan's 100 most beautiful beaches. The grove of pine trees, including 600 year old trees with picturesquely exposed roots, stretches for 1 km along the coastline of what is one of the best beaches for swimming in the prefecture.



Scenic spots near Tsuda-no-Matsubara

## Play with the dolphins

Not only can you feed the dolphins, there are a range of other programs available. You can swim together with the dolphins in the "Dolphin Swim", play with them, and you can even experience being a dolphin trainer. \*All programs require advance reservation.

### Dolphin Center

Address: 1520-130 Tsuruwa, Tsuda-machi, Sanuki City  
Tel: 0879-23-7623  
Opening Hours: 10:00 – 17:00  
Open to 18:00 in Summer  
Closed: (April – September) Open every day, (October – March) Closed Wednesday  
Parking: 15 car spaces



## Sea Kayaking Experience

Take a leisurely trip across the gentle waters of Tsuda bay! Paddle beside cliffs walls and uninhabited islands you couldn't normally get close to, join dolphin watching tours and more as you rediscover the attraction of the sea.

### Quataraso Sanuki Tsuda

Address: 24-2 Tsuruwa, Tsuda-machi, Sanuki City  
Tel: 0879-42-5520  
Closed: Tuesday  
Parking: 100 cars spaces

## Michi-no-Eki Tsuda no Matsubara

Address: 103-3 Tsuda, Tsuda-machi, Sanuki City  
Tel: 0879-42-5520  
Opening Hours: 09:00 – 17:00  
Closed: January.1  
Parking: 75 cars spaces

## Tsuda Matsubara Service Area

Expressway service area that is also accessible to public road users. Not only can you enjoy Sanuki Udon here, you can also try unique local items like the Sakkichan Burger which contains udon and the Daifuku Kinakoro made with refined Japanese sugar "Wasanbon".

Address: 935-5 Tsuruwa, Tsuda-machi, Sanuki City (Inbound) Tel: 0879-42-1777  
Opening Hours: 07:00 – 22:00  
Closed: No closing day  
Parking: Parking area for public road users available



1 Sanuki City Outdoor Music Space Theatron 2 Sanuki Winery 3 Sanuki City Produce Center



Sightseeing spots around the Ohkushi Peninsula

## Sanuki City Outdoor Music Space Theatron

The largest outdoor performance space in the Chugoku and Shikoku Regions. There is also an outstanding view of the surrounding scenery and many famous artists and others have given live performances here.

## Sanuki Winery

The Sanuki Wine sold here is made from grapes grown in the prefecture. No entrance fee is required to inspect the winery and taste the wine.

Address: 2671-13 Oda, Sanuki City  
Tel: 087-895-1133

Opening Hours: 09:00 – 17:00  
Closed: Tuesday (Open on Public Holidays)  
Parking: 74 car parking spaces



### Visiting Historical Sites

## Historical sites within walking distance of Sanuki City Outdoor Music Space Theatron

### Nagazowai Kannon (the Goddess of Mercy)

This temple was established a long time in the past, to pray for the safety of the ships that were continually being wrecked by swift tides below. The original Kannon statue that was erected is still standing on the rocks above the cliff.



### Rock quarrying site

Ancient tool marks and other remains of historical stone quarries can be seen in Shirokodani.



### Signal Fire Site Ruins

These structures were built by the feudal lord of Takamatsu to warn of the arrival of foreign ships. Originally the ruins were 100m above their present position but they have been restored and preserved in their currently location.

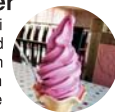


## Sanuki City Produce Center

Direct sales of Sanuki wine, seafood, cakes and other local produce from Sanuki City. You can also eat Sanuki Wine Soft Ice Cream here.

Address: 2671-11 Oda, Sanuki City  
Tel: 087-895-1143

Opening Hours: 09:00 – 17:00  
Closed: Tuesdays (Open on Public Holidays)  
Parking: 74 car parking spaces





# Enjoy hot springs surrounded by nature

Enjoy a relaxing time in a hot spring



We introduce several hot springs that are popular with local residents, including hot springs surrounded by nature, and hot springs where you can look out over the sea from your bath. So why not stop by on your travels and enjoy a relaxing time.



Quataraso Sanuki Tsuda



Twin Pal Nagao

## Quataraso Sanuki Tsuda

Come try the onsen course, which is full of variety, and the fitness course which has the latest equipment, and refresh yourself in mind and body. Swimming costume required.

Address: 24-2 Tsuruwa, Tsuda-machi, Sanuki City  
Tel: 0879-42-5888

Opening Hours: Weekdays 12:00 – 21:30,  
Saturday 10:00 – 21:30, Sunday 10:00 – 20:00

Closed: Every Tuesday (When a public holiday falls on a Tuesday, closed the following day)

Parking: 100 car parking spaces

Will you meet a wild animal?



## Ryokan Nodaya Takeyashiki

A sukiya-style ryokan surrounded by natural wilderness in the mountains of Asan.

Address: 123-1 Takeyashiki, Tawa, Sanuki City

Tel: 0879-56-2288

Opening Hours: Weekdays 11:00 – 21:00

Closed: Irregular

Parking: 40 car parking spaces

\*No public admission to the bath. Entry to the bath is only available to dining room customers and guests staying overnight.

Near Ookuboji Temple



## Twin Pal Nagao

With a hot spring, outdoor bath and training room, this amusement spot has all the facilities. Swimming pool available July – August.

Address: 1494-1 Nagaomyo, Sanuki City

Tel: 0879-52-1126

Opening Hours: 10:00 – 21:30

Closed: Wednesday (When a public holiday falls on a Wednesday, closed the following day)

Parking: 200 car parking spaces / 8 handicapped parking spaces

## Here are some more recommended hot spring facilities

### Kasuga Hot Spring

Enjoy a therapeutic dip in a medicinal spring rich in high quality radon and biwa leaves floating in the tub.

Address: 22 Kanzaki, Sangawa-machi, Sanuki City

Tel: 0879-43-6565

Opening Hours: 10:00 – 21:00

Closed: Tuesday

Parking: 69 car spaces / 2 handicapped parking spaces

### Camellia Hot Spring

You can enjoy a therapeutic sauna with water from a medicinal spring rich in high quality radon, a mist sauna and more. Massage and fitness equipment is also available.

Address: 2988-1 Ishida higashi ko, Sangawa-machi, Sanuki City

Tel: 0879-43-2566

Opening Hours: (January – April) 10:00 – 21:00,

(May – June) 10:00 – 22:00

Closed: Thursday, End of Year / New Year Period

Parking: 80 car spaces

### Yutopia Miroku

There are large common baths, cold water baths, medicinal baths and saunas where you can refresh yourself in mind and body.

Address: 3424 Tomidanaka, Okawa-machi, Sanuki City

Tel: 0879-43-5200

Opening Hours: 09:00 – 21:00

Closed: Wednesday (When a public holiday falls on a Wednesday, closed the following day),

End of Year

Parking: 270 car spaces



## Hot Springs

Name of Facility	Address	Telephone	Opening Hours	Closed Dates
<b>Quataraso Sanuki Tsuda</b>	24-2 Tsuruwa, Tsuda-machi, Sanuki City	0879-42-5888	Weekdays 12:00 – 21:30 Saturday 10:00 – 21:30 Sunday 10:00 – 20:00	Tuesday
<b>Ryokan Nodaya Takeyashiki</b>	123-1 Takeyashiki, Tawa, Sanuki City <small>*No public admission to the bath. Entry to the bath is only available to dining room customers and guests staying over night.</small>	0879-56-2288	11:00 – 21:00	Irregular Closing
<b>Twin Pal Nagao</b>	1494-1 Nagaomyo, Sanuki City	0879-52-1126	10:00 – 21:30	Wednesday
<b>Kasuga Hot Spring</b>	22 Kanzaki, Sangawa-machi, Sanuki City	0879-43-6565	10:00 – 21:00	Tuesday
<b>Camellia Hot Spring</b>	2988-1 Ishida higashi ko, Sangawa-machi, Sanuki City	0879-43-2566	(Jan-Apr) 10:00 – 21:00 (May-Dec) 10:00 – 22:00	Tuesday, End of Year / New Year Period
<b>Yutopia Miroku</b>	3424 Tomidanaka, Okawa-machi, Sanuki City	0879-43-5200	9:00 – 21:00	Wednesday, End of Year / New Year Period

## Accommodation

Name of Facility	Address	Telephone	Closed Dates
<b>Quapark Tsuda</b>	Tsuda Matsubara Chinai, Tsuda-machi, Sanuki City	0879-42-2521	Open everyday of the year
<b>Minshuku Kitayama-senoshitaso</b>	3806 Tsuda, Tsuda-machi, Sanuki City	0879-42-1830	Open everyday of the year
<b>Tabiyado Nitta</b>	2734-24 Tsuda, Tsuda-machi, Sanuki City	0879-42-2535	Open everyday of the year
<b>Bungoya Ryokan</b>	1080-5 Tsuda, Tsuda-machi, Sanuki City	0879-42-2266	Open everyday of the year
<b>Montpellier Auberge</b>	3311-1 Tsuda, Tsuda-machi, Sanuki City	0879-42-2508	Irregular Closing
<b>Yutopia Miroku</b>	3424 Tomida, Okawa-machi, Sanuki City	0879-43-5200	Wednesday, End of Year / New Year Period
<b>Kasuga Hot Spring</b>	22 Kanzaki, Sangawa-machi, Sanuki City	0879-43-6565	Tuesday
<b>Ryokan Nodaya Takeyashiki</b>	123-1 Takeyashiki, Tawa, Sanuki City	0879-56-2288	Irregular Closing
<b>Seaside Corridor Caravan Park</b>	2671-88 Oda, Sanuki City	087-895-1150	Tuesday, January – February, End of Year / New Year Period
<b>Cottage Sakura no Sato</b>	2450 Nagaohigashi, Sanuki City	0879-52-4166	Open everyday of the year
<b>Miroku Natural Park Campground</b>	3286 Tomidanaka, Okawa-machi, Sanuki City	0879-43-5200	Wednesday, End of Year / New Year Period
<b>Minamikawa-Shizen-no-ie</b>	1309 Minamigawa, Okawa-machi, Sanuki City	0879-42-3107	End of Year / New Year Period

## Pilgrim Accommodation

### Shidoji Temple Area

Name of Facility	Address	Telephone	Closed Dates
<b>Ryokan Iseda</b>	2645-1 Shido, Sanuki City	087-894-7778	Negotiable *Primarily for Group Customers
<b>Ishiya Ryokan</b>	599-1 Shido, Sanuki City	087-894-0021	Negotiable
<b>Ryokan Sakaeso</b>	573-1 Shido, Sanuki City	087-894-0029	12/31~1/1 12/31 – 1/1
<b>Taiya Ryokan</b>	547 Shido, Sanuki City	087-894-0038	Open Everyday of the Year
<b>Ryokan Fujiya</b>	548-8 Shido, Sanuki City	0120-05-1175	Tuesday

### Nagaoji Temple Area

Name of Facility	Address	Telephone	Closed Dates
<b>Azumaya Ryokan</b>	973-9 Nagaonishi, Sanuki City	0879-52-2415	12/28 – 1/3
<b>Nagaoji</b>	982 Nagaonishi, Sanuki City	0879-52-3084	Open Everyday of the Year

### Ookuboji Temple Area

Name of Facility	Address	Telephone	Closed Dates
<b>Minshuku Yasokubo</b>	103-5 Tawakanewari, Sanuki City	0879-56-2031	Open Everyday of the Year

\*Changes to opening hours may occur as a result of public holidays, etc. Please contact the facility in advance to confirm availability