



Okura Hotel



Tourist facility		Regular holiday
● Marugame Castle		Open all day
● Marugame City Museum		Mon
● Marugame Genichiro-Inokuma Museum of Contemporary Art		Mon
● Akitora no Yakata		Wed
● Kyogokuan		Mon, Tue
Udon		
① Ishikawa udon		Tue
⑬ Wataya		Sun, National holidays
⑮ Iyasaka		Mon
Honetsuki-dori		
② Ikkaku		Tue
③ Santarou		Sun
⑦ Wakiya		Sun
⑫ Usagi		Open all day
⑰ Ribuya		Sun, National holidays
⑲ Marugamedori		Sun
⑳ Uokame		Sun, National holidays
Washoku		
⑤ Nishitakeshokudo		Irregular holidays
⑥ Shirasagi		Wed, 3rd Sun
⑩ Ittoku		Mon, Tue
⑪ Shinsei		Wed
⑫ Yushokuboya		Irregular holidays
Restaurant		
④ Hot Masara		2nd and 4th Tue
⑭ Miroc Brewery		Mon
⑱ Butsugiri-Tanchan		Mon
⑳ Marugame Txakoli stand		Mon, Tue, Sat, Sun
Cafe		
⑧ Midoriya		Wed afternoon, Sun
⑮ Cafe MIMOCA		Mon
⑯ cafe kera'an		Irregular holidays
⑰ Cafe La tope		Mon, Tue
⑲ Tomiya coffee		Sat, Sun
⑳ Starbucks Coffee		Irregular holidays
Souvenir		
🛍 Marugame Castle Souvenir Shop		Open all day
🛍 Hogetsudo		New Year's Day
🛍 OIKAZE		Tue
🛍 Onishi Shokuhin		Sun, National holidays
🛍 Kijoan		Wed
⑦ Midoriya		Wed
⑨ Kangetsudo		Wed, 1st and 3rd Tue
⑳ Uchiwa Workshop "Take"		Open all day
Tourist information office		
🏠 Public toilet		
☎ Public phone		International calls are possible
🚕 Taxi Stop		
🚌 Bus Stop		
🚗 Car rental		
🅑 Parking		
🚲 Bicycle parking lot		
🚓 Police box		
🅑 Park		
🏛 Museums		
🏯 Temple		
🏨 Hotel		
🏪 Convenience store		
🏬 Supermarket		
🛍 Souvenir shop		
📬 Post office		
🏧 ATM		Compatible with cards issued overseas
📶 Free Wi-Fi		

MARUGAME CITY GUIDE



Open 9:00 a.m. ~ 4:30 p.m.
(Last entry 4:00 p.m.)
Open all year round
Admission fee is required to enter the castle tower.
10 minutes on foot from Marugame Station



Marugame Castle

A famous castle with soaring stone walls that continues to be cherished by the local citizens

Marugame Castle is the symbol of Marugame City with 420 years of history. It is known throughout the country as "the castle of stone walls" and has been selected as one of the 100 best castles in Japan. It is the smallest of only 12 remaining wooden castle towers in Japan and is designated as a National Important Cultural Property. You can overlook panoramic views of Marugame City and the Seto Inland Sea from the top. Local citizens enjoy cherry blossom viewing, walking, jogging, and other activities at Marugame Castle.



Open 7:00 a.m. ~ 7:00 p.m.
Open all year round
Rental and Return location is the Marugame Station South Parking Lot (Just outside Marugame Station South Exit)

Rental Bicycle

Why not rent a bicycle and enjoy sightseeing in Marugame?

Since bicycles allow for a wider range of travel, they are recommended for not only sightseeing but also for visiting local Udon noodle restaurants. People who can rent a bicycle: Junior high school students or older (Younger children that can ride a 24 inch bicycle while being accompanied by a parent can also rent one) Personal ID (passport, drivers license, student card, etc.) is required to be shown when renting a bicycle. Standard bicycle fees: ¥200 for up to 6 hours, ¥300 for all day, plus ¥500 deposit. Electric bicycle and Sport bicycle fees: ¥500 for up to 6 hours, ¥700 for all day, plus ¥1,000 deposit.



Tel. 0877-23-6326
Open 9:30 a.m. ~ 5:00 p.m.
(Last Entry 4:30 p.m.)
Closed on Wednesdays (Open on public holidays) / Admission fee is required
10 minutes by car from Marugame Station



Nakazu Banshoen Garden

The view from vermilion lacquered Yogetsu bridge is exceptionally beautiful.

Nakazu Banshoen is a traditional Japanese garden with pathways weaving around manicured ponds, created by Takatoyo Kyogoku, the feudal lord of Marugame, as his personal villa. When you enter the park, you are greeted with a vermilion-lacquered arched bridge. The 15-meter-diameter, 600-year-old pine tree on the west side park is a must see attraction! Also, the Marugame Museum of Art within the garden is home to the works of Millet, Corot, Rousseau and others from the Barbizon School. The Marugame Uchiwa Paper Fan Museum opened in March 2023.



Tel. 0877-23-5141
Free shuttle bus from Marugame station



Boat Race Marugame

Night races are held!

Boat racing is a motorboat competition where professional racers compete against each other and spectators can place bets on the race. You can predict the placement of the 6 competing boats and receive a dividend if you choose correctly. Boat Race Marugame holds night races referred to as the "Marugame Blue Nighter". There are other facilities to enjoy while watching the races, such as the food court, a community park "Gruun", and a kid's boat park "Moovi" located next to Marugame Boat Race.

Tasuke Toro Stone Lantern

Starting point of the Konpira Pilgrimage

Visiting the Konpira shrine is called "Konpira-mairi". This "Tasuke Toro" is a symbol of Marugame Port, which was often crowded with pilgrims. The boats carrying these pilgrims arrived at Marugame Port where this lantern is located. In those days, the pilgrims walked about 12 kilometers from here to Kotohira.



It is still lit at night.



5 minutes on foot from Marugame station

Marugame Uchiwa Paper Fan

Marugame Uchiwa is a Traditional Craft of Japan

The Marugame Uchiwa was made as a souvenir for those visiting Konpira Shrine. Today, more than 90% of all Uchiwa produced in Japan are made in Marugame. Various types of Uchiwa are sold, and you can choose the one that you like best, from traditional ones to modern designs.



Why don't you make your own original Uchiwa at the Museum and discover the art and beauty of the Marugame Uchiwa. Please make a reservation by 3:30 p.m. the day before.

Tel. 0877-24-7055
Open 9:30 a.m. ~ 5:00 p.m.
(Last entry 4:30 p.m.)
Closed on Wednesdays
(Open on public holidays)
Admission fee is free
The Uchiwa hand crafting experience: ¥1,000
10 minutes by car from Marugame Station



Uchiwa Workshop "Ta-ke"



Skilled craftsmen demonstrate how to make an Uchiwa and sell them at the workshop in the Marugame Castle Tourist Information Center. Reservations are required for the Uchiwa making experience.

Tel. 0877-25-3882
Open 10:00 a.m. ~ 4:30 p.m.
Open all year round
The Uchiwa hand crafting experience: ¥1,000
10 minutes on foot from Marugame Station



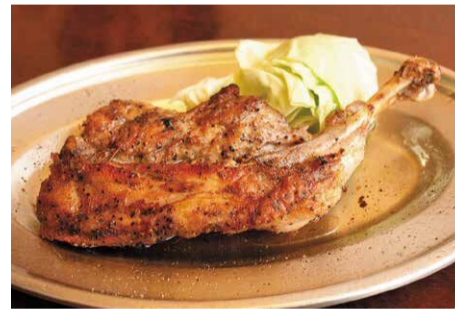
Check out the gourmet page on the Marugame Tourism Association website.



Sanuki Udon Noodles

Eating Kagawa's specialty Udon in the home of Udon!

Sanuki Udon, the favorite of Kagawa residents. Let's enjoy eating some delicious chewy noodles with savory soup stock. Each restaurant has its own special noodles and soup stock, and you can explore the differences between them. There is a wide variety of udon dishes! "Kake Udon" is a hefty portion of noodles severed in a bowl of zesty soup. "Kamaage Udon" is eaten with a special dipping soup. "Kamatama Udon" is hot noodles served with raw eggs. "Nikku Udon" is a bowl of udon noodles with salty and sweet cooked beef. Rental bicycles and taxis are recommended to enjoy visiting Udon restaurants!



Check out the gourmet page on the Marugame Tourism Association website.



Honetsuki-dori

The spicy flavor of this chicken is sure to be addictive!

Honetsuki-dori originated in Marugame. This gourmet chicken leg is seasoned with special spices and is cooked in the oven. The outside is crunchy while the inside is very juicy. You can choose from two kinds of chicken, chewy Oya-dori (adult chicken) and juicy and soft Waka-dori (young chicken).



"Honetsuki Jyu Jyu" the mascot of Marugame

Marugame Castle Tourist Information Center & Souvenir Shop



Open 9:00 a.m. ~ 4:30 p.m.
Open all year round
10 minutes on foot from Marugame Station

The place to buy souvenirs of Marugame City!

You can buy original souvenirs of Marugame City here. These goods include items honoring Marugame Castle, "Honetsuki Jyu Jyu" the mascot of Marugame, local confectioneries and much more! Please drop by before or after visiting Marugame Castle.



Specialties of Kagawa Prefecture and Marugame City

Oiri Sweets

Oiri is a rice cake sweet made from sticky rice and sugar. The taste is very light. Originally, Oiri was a wedding sweet that the bride handed out.



Kagawa Hontaka Chili Peppers These are high quality red peppers which are also known as "Rare Red Peppers". Please try their extra-fine spicy flavor!

Wasanbon (refined sugar)

Wasanbon is a sugar confectionery that melts in your mouth. It goes well with green tea, coffee, and black tea.



Shoyu-Mame (Soy Sauce Soaked Beans) Roasted fava beans are soaked in a special sauce made with soy sauce, sugar, and other ingredients.

Rickshaw

Why don't you take a rickshaw tour around Marugame Castle?

The tour takes about 30 minutes to visit all the photo spots while being guided by the driver. You can enjoy views that can only be experienced from a rickshaw. What a great memory to make during your visit! You can reserve a rickshaw ride at the Marugame Castle Tourist Information Center.

